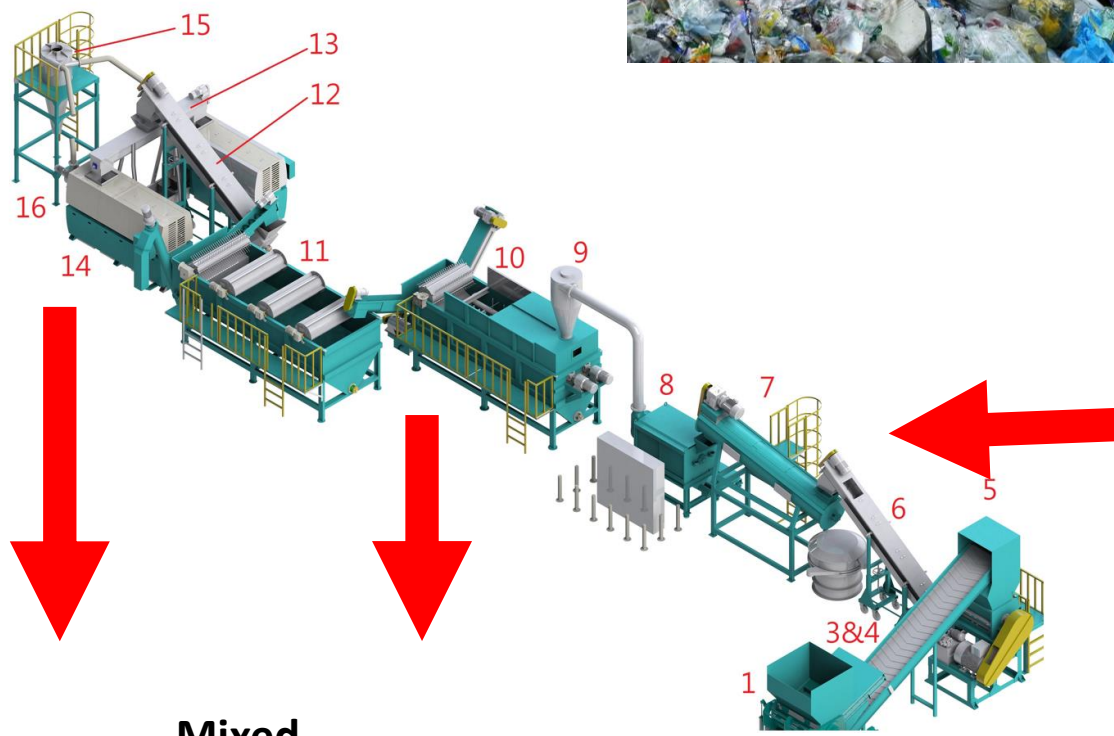


RECYCLED content X sustainability :

- Must be well calculated in all aspects
- Respecting to local sources solution
- Recycled = „post using“ / end-of-life
- Avoid of out of reach ambitions
- Fixing of sources in the sense of circularity

SOURCES :
(same all over)



50%

50%

Mixed Excretes 1



Mixed Excretes 2 & 3



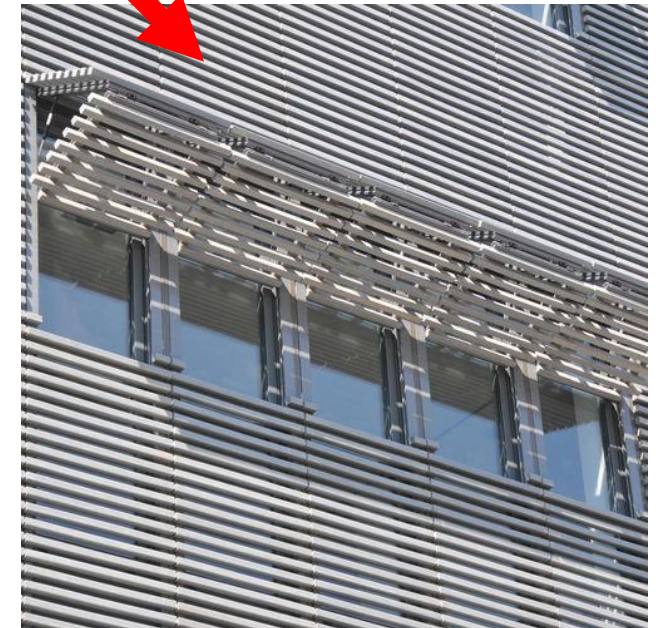
FUNDAMENTAL -PE virgin film X 100% post-recycled film :

(Q : is the quality acceptable ?!)

(A : it can be even cool if well promoted – all in hands of the Seller)



„Bottle-to-Bottle“ ?!
NO way for 60% of plastic post-waste
(Excretes)
...than looking for less
challenging applications



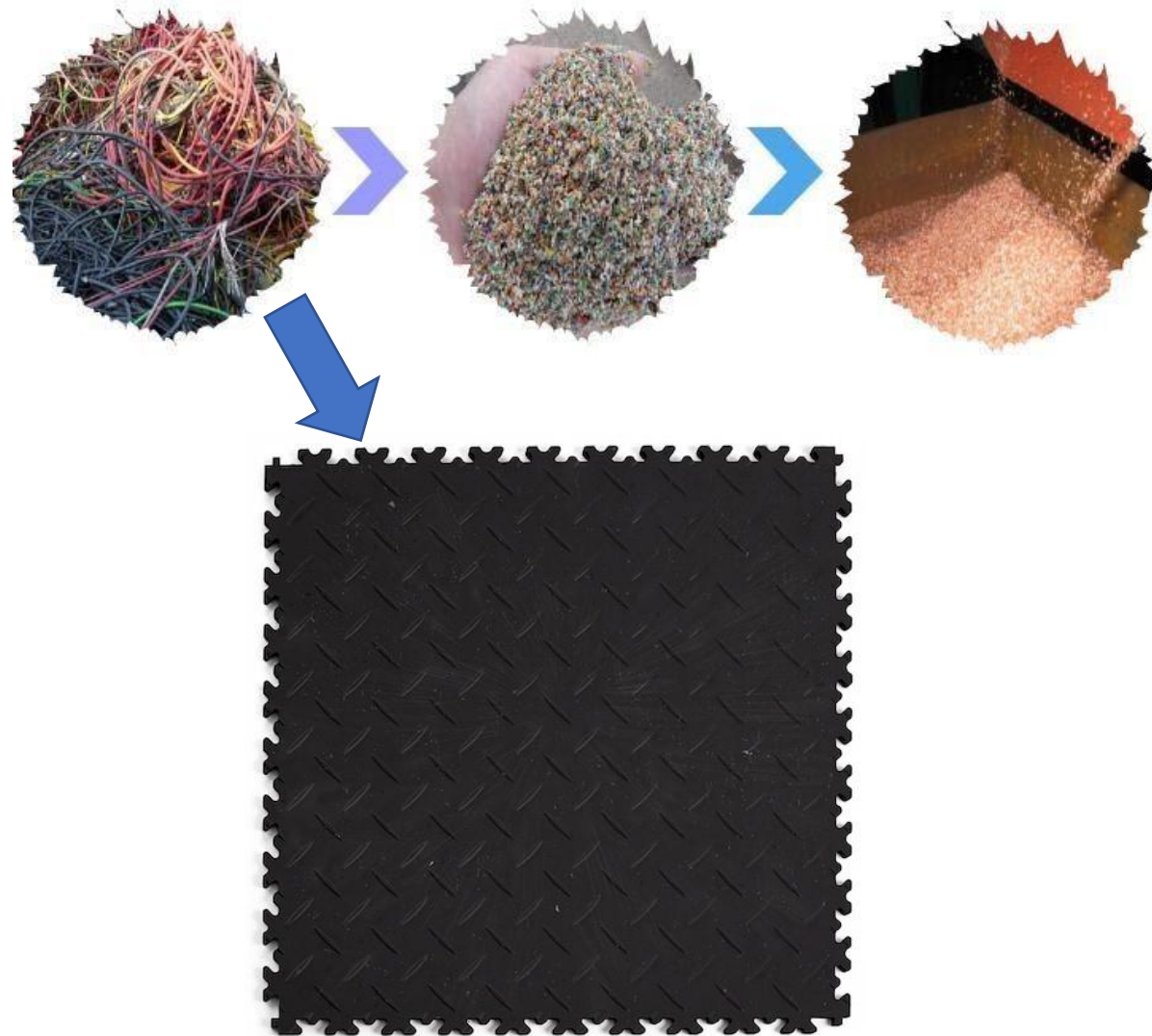


**„Bottle-to-Bottle“
?!**

**NO way for 60% of
plastic post-waste**

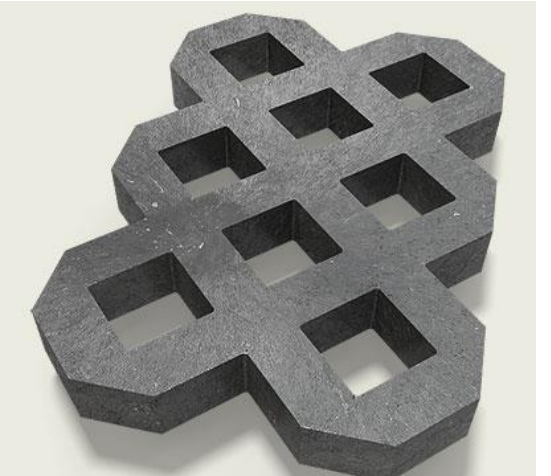
Ex.no.2 : wire&cable EOL (end-of-life) re-processing

(even 30-40 years old cables + copper as a virgin material ; about 1,2 mil.TO per Year in Europe)



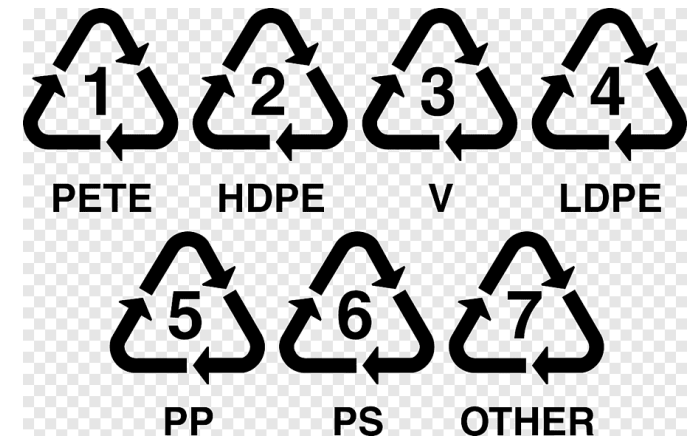
Ex.no.3 : post-consumer mixed

(after sorting still remain 40% of mixed EOL plastics ; sorting level can be negotiated with waste-producer)



Ex.no.4 : post-consumer sorted – QUALITY 1

(sorting provides relatively pure and specific polymers – but still remains contaminated - IT WILL NEVER CHANGE)



Ex.no.5 : post-consumer sorted – QUALITY 2

(sorting and recycling quality is unequal ; lower quality can be used for higher thickness and more massive products)

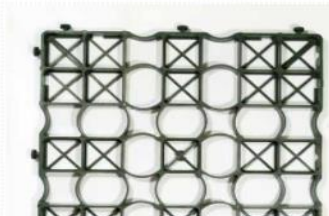


Puruplast E50

Typ vhodný pro:
domácí i profesionální
využití - nejpevnější a
nejuniverzálnější typ



Puruplast IG40



Puruplast IG30

Typ vhodný pro:
domácí nenáročné použití
v zahradách nebo parcích



Puruplast MP38

Ex.no.6 : post-consumer mixed+sorted

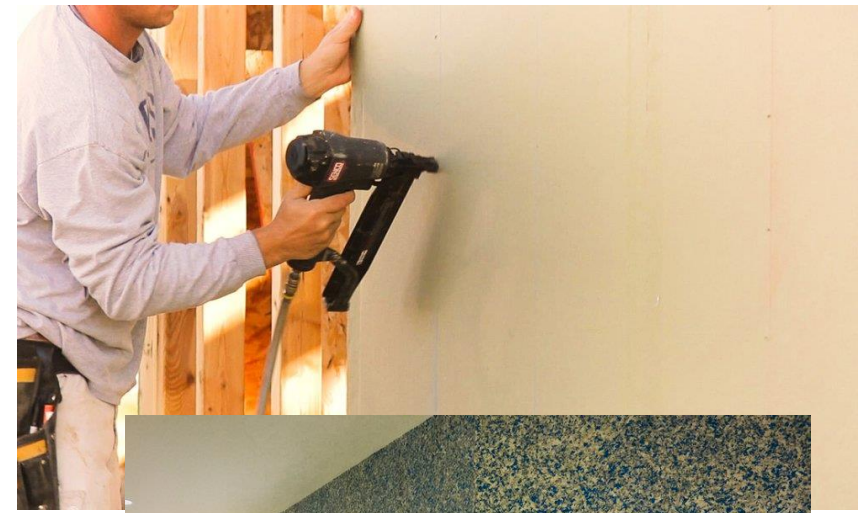
(Products with an requirements on durability,
weatherability and user safety)

It can be well combined with mineral fillers including
B&C waste)



Ex.no.7 : post-consumer spec-sorted

(Tetrapak specific composition = specific and unique properties for wall/floor/roof pannels)



Ex.no.8 : post-consumer spec-collected

(individual seller's activities providing very well defined polymers/materials in excellent quality

ATTN : low volume + not very sustainable)



Ex.no.9 : post-consumer waste-of-waste

(all residuals from previous – variable content and quality whenever – it can be controlled only partially)

Estimated about 20-25% from total plastic waste)



Roof covering

Florists



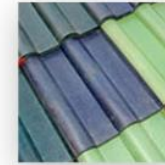
Garden borders

Ex.no.10 : plastic post-consumer „in minority“

(partially sorted plastics only as a binder – combination with >50% of minerals
Quite huge volume and potential for post-mixed-plastic waste)



polymer-sand paving
tiles



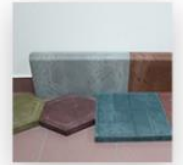
polymer-sand roof tiles



polymer-sand sewer
manholes



polymer-sand sewer
wells



and other polymer-sand
products.

THE POLYMER-SAND COMPOSITION



[\(309\) Waste Processing Equipment | Automated line - YouTube](#)

10 STEPS TO REACH TRUE-SUSTAINABLE SOLUTION :

- 1 – UNDERSTANDING AND APPRECIATION OF THE POST-WASTE QUALITY....AMBITIONS RESTRAINING**
- 2 – PRODUCT/ARTICLE IDENTIFICATION (in sense of material replacement – no product range extension)**
- 3 – AVAILABLE WASTE SOURCING WITH LOCAL ASPECT TAKING INTO ACCOUNT**
- 4 – 1st LCA and SLCA STUDY BASED ON MODELLING AND SIMULATIONS (transport costs accented)**
- 5 – PRODUCT DESIGN + FORMULATION RESEARCH + TECHNOLOGY ENGINEERING**
- 6 – SEMI-TESTING PHASEprototype moulding, 3D printing etc.**
- 7 – 2nd LCA and SLCA STUDY – MORE PRECISE SIMULATION (already all aspects calculated more accurately)**
- 8 – DECISION MAKING ABOUT THE PROJECT REALISATION**
- 9 – STARTING-UP AND 3rd LCA and SLCA STUDY COMPLETION**
- 10 – RIGHT, TRUE AND REAL ARGUMENTATION....NO-GREENWASHING COMPLIANCES**

RESEARCH ON :

- 1.) TECHNOLOGICAL DEVELOPMENT – sustainable processes definition (all-in-one converting)
- 2.) CONTAMINATION – understanding as a fact + minimization of negative impacts on the product
 -no „bottle-to-bottle“ pushing ahead
 -new evaluation process for the final product creation
 -final consumer/customer education
- 3.) MATERIAL RESEARCH – no chemical modifiers on the level that will „kill“ any sustainability
- 4.) LOCAL SOLUTION FINDING - co-operation with municipalities, governances, enterprises

THREAT FOR ALL :

Barriers for local peroduction in EU from local sources (waste) and NOT controlled import from worldwide (including not-sustainable transport)

